

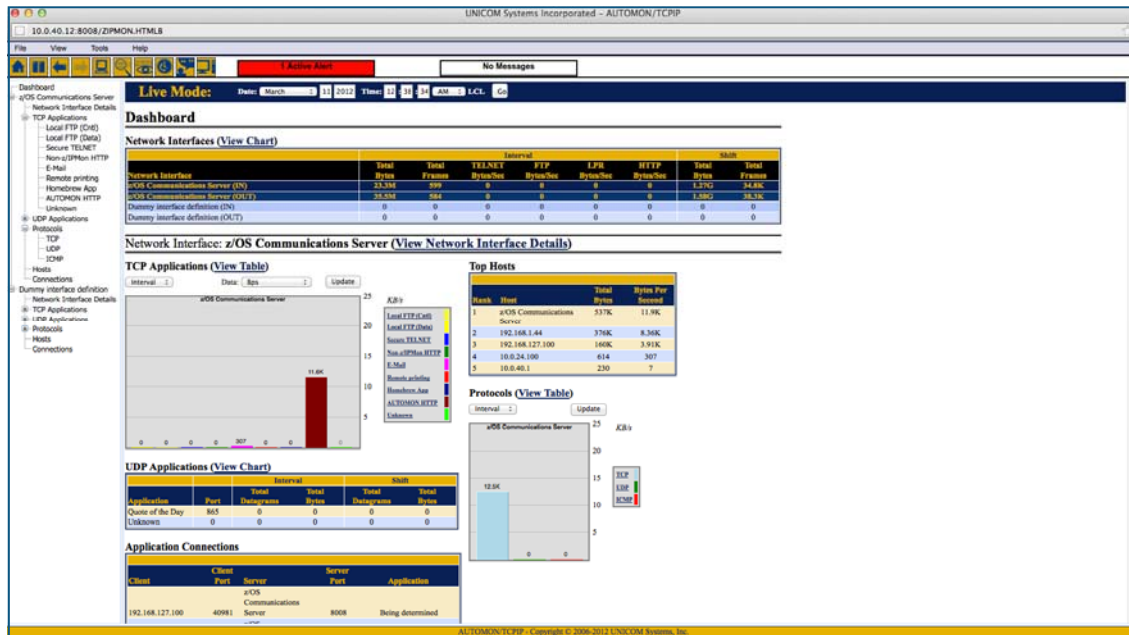


Putting IT All Together.™

# PRODUCT FACT SHEET

## AUTOMON/TCPIP

The Modern Solution for z/OS TCP/IP Performance Management



AUTOMON/TCPIP Dashboard View Provides Complete Overview from Any Browser



AUTOMON/TCPIP Delivers One-click Packet Trace Start, Stop and View



# AUTOMON/TCPIP

## *The Modern Solution for TCP/IP Performance Management*

### Technical Specifications

#### Dashboard Consolidates and Presents All Important TCP/IP Network Activity

The heart of the AUTOMON/TCPIP interface is the Dashboard where an overview of all TCP/IP activity in your system is constantly refreshed. The AUTOMON/TCPIP Dashboard gives you an overview of all activity in your network, including full support for all hardware interfaces, applications, protocols, connections and hosts. Using the AJAX/Web interface, you can click on any specific component to drill down to more detailed information, all from any standard Web browser.

#### View Dynamically Updated Live Data, or Look Back Using Retrospect™

Using the innovative Retrospect feature, you can request data from another date and time in the archive file if you need to look back to a particular period of time to review the activity or to troubleshoot a past problem. Just change the date and time to the period you want to review and AUTOMON/TCPIP will recreate the TCP/IP activity exactly as it happened with simple, DVD like controls. The Retrospect files may also be used as input to the z/IPUtil report writer as a data source.

#### New Advisor™ Facility Diagnoses Problems For You

Advisor takes the guesswork out of managing your z/OS TCP/IP System. Advisor processes your Retrospect data according to a range of time you specify, and then will automatically suggest and set Alerts based on changes in your system. Using mathematically and statistically sound principles, Advisor will determine what type of change is significant enough to create an Alert. This means AUTOMON/TCPIP determines what is important automatically, watches your network performance and then TELLS YOU that you potentially have an issue, all without you having to do anything at all.

#### z/IPUtil™ Report Writing Capability

With the z/IPUtil Report Writer, you can select any of the archived data fields and create your own report complete with sub-total and sorting abilities—even graphs. Rather than create "canned" reports which may be too limiting, z/IPUtil provides the ability to report on whatever you need, with easy to understand "select" type statements in the JCL.

#### Enhanced Packet Trace Facility - Open Directly in Wireshark

Our packet trace facility is one of the most valuable tools in AUTOMON/TCPIP, allowing you to easily look at a formatted trace of connection handshakes, or any data passing through your system. The entire data packet is captured and fully formatted including breaking out all network headers, color coded by protocol—even giving you the ability to translate the data into ASCII or EBCDIC with one button. And with one button you can open the AUTOMON/TCPIP trace data in the industry-standard WireShark trace analysis program offering additional diagnostic capabilities.

#### Dynamic Alerts Means You Know About Critical Events

The Alert feature works in the background, dynamically notifying you visually or via email when a threshold is reached. Alerts are one of the most valuable features of AUTOMON/TCPIP, because you know when something is wrong BEFORE it causes a network or system outage. For example, receive an alert when a particular connection (like your manager's!) reaches a response time level that you know is not acceptable. Even when you're not watching the system, AUTOMON/TCPIP is.

#### Runs Directly on your Mainframe

AUTOMON/TCPIP runs natively on your z/OS as a started task, requiring no CICS resources. No additional software is needed or is installed on any server or workstation.



UNICOM Systems, Inc. \* UNICOM Plaza \* 15535 San Fernando Mission Valley Blvd \* Mission Hills, CA 91345

Tel: +1.818.838.0606 \* Fax: +1.818.838.0776 \* Email: [info@unicomsi.com](mailto:info@unicomsi.com)

For more information including our international office locations please logon to <http://unicomsi.com>

